



# Roads Investment Programme West Midlands Area 9

## M42 Junction 6 Improvement

Presented by Highways England

## M42 J6 Improvement - Purpose of the Presentation

### ▪ Purpose of the Presentation

- To start early discussions with key stakeholders in advance of the Formal Public Consultation
- Seek your views, so these can be considered during the sifting process of viable options to take forward to Public Consultation events planned for September/October 2016

### ▪ Need for the Scheme

***“Modelling has shown that even without proposed local development that by 2019 the M42 J6 will be expected to suffer from significant congestion during peak hours and operate at an unacceptable level of service” (Transport Summary Report -2015)***

*Current (2014) M42 mainline daily volumes of 135,000 between Junction 5 and 7  
Forecast growth on strategic network around 20% to 2031  
This growth, does not include traffic growth associated with local developments,  
e.g. HS2, Birmingham Airport, JLR, NEC, Resorts World etc.  
which will exacerbate this problem.*

## M42 J6 Improvement – Commitment and Challenges

- **Highways England Delivery Plan (2015-2020)**

*M42 J6 - “developing the options in more detail and preparing the scheme for public consultation in 2016, this will take into account planned station developments linked to High Speed 2. We anticipate being able to recommend a preferred route in early 2017. We are planning to start construction in 2020”*

Long Term Challenges	Short Term Challenges
Integration with HS2 and other local developments in the area, in order to maximise the benefits of the whole programme of planned works.	Refining a short list of options, inc land use and network, to be tested through traffic modelling and other local/ engineering constraints.
Planned works by others constraining scheme development	Early Stakeholder Liaison to understand the local issues
Uncertainty of future local developments and impact on the scheme	
Severance issues to local communities	
Environmental impact – Potential loss of ancient woodland; noise/ visual effects	



## M42 J6 Improvement – Scheme Objectives

### ▪ What we are seeking to achieve

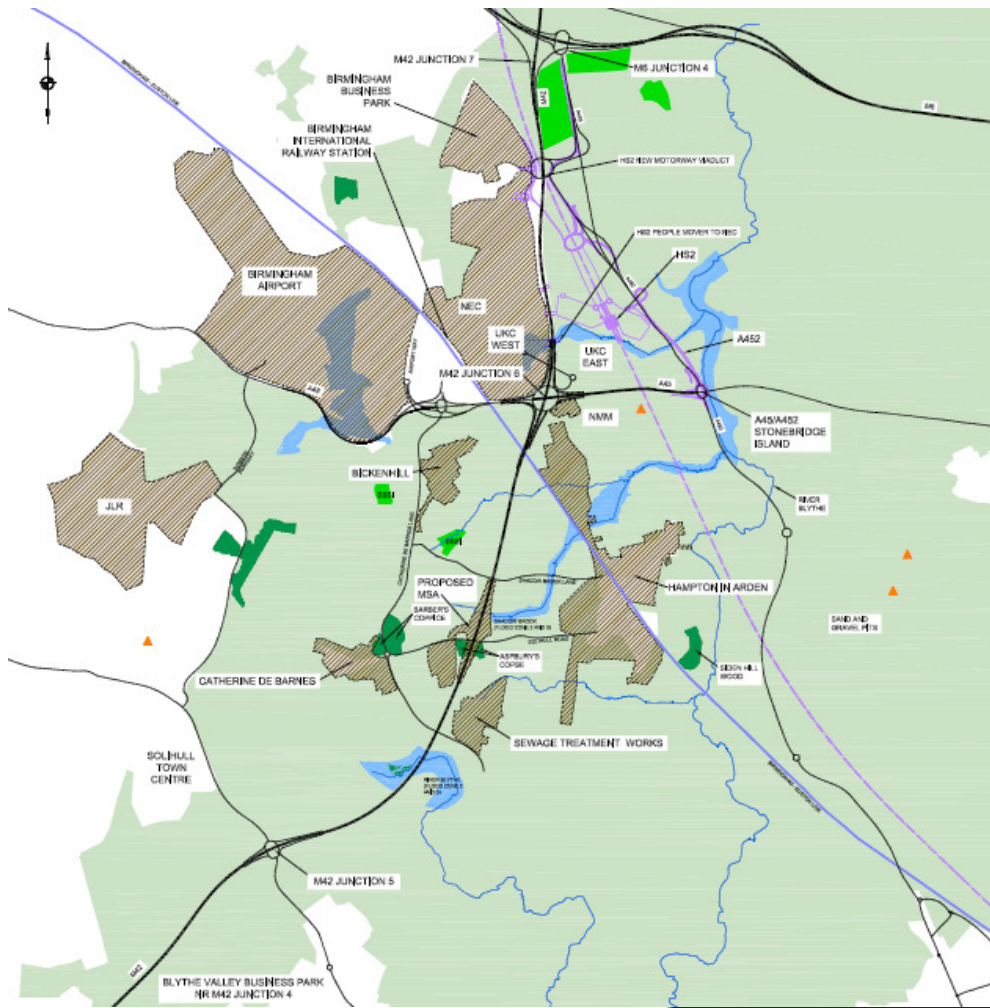
- **Safer Strategic Road Network**
  - Promote reliable and safe operation of the wider corridor
- **Improved Capacity**
  - Improvement of M42 J6 seeks to increase capacity and address current and future congestion
- **Increase resilience and reliability of network**
- **Improve access to planned local developments**
  - In order to support the economic development of the area.
- **Improved Environment**
  - Minimise Impact on environment and enhance environmental features where possible
- **Improve and increase provision for Non Motorised Users**

## M42 J6 Improvement – Progress to date

- April 14 to Sept 14, technical review of UK Central (UKC) Proposals for Improvement of M42 J6, Consultation and Emerging Option 2A developed
- Stage 0 (Project Initiation) February to October 15 (Collating evidence to better understand the transport problem and prepare initial solutions)
- Stage 1 (Options Development) commenced November 15
  - Wide ranging optioneering exercise resulting in identification of 30 no. options
  - Initial high level assessment exercise carried out to rank options, using transport appraisal (EAST) process.
  - Initial workshop held with key stakeholders from Highways England and SMBC to present options emerging, receive and incorporate comments
  - Refinement of options, carry out sample traffic testing
  - Review of engineering considerations and constraints, including 3d modelling and consideration of impact on stakeholders and the environment.
  - Resulting in selection of 6 no options to present during early consultation exercise

## M42 J6 Improvement – Proposed Timeline to Public Consultation

- Early engagement with SMBC/UKC Mar to Apr 16
- Introduction letter to stakeholders to request meeting(s) Apr 16
- Set up website Apr 16
- Early Consultations held with Stakeholders Apr to Aug 16
- Identify options to take to Public Consultation Jun 2016
- Assess suitability of options Jun to Aug 16
- Prepare for Public Consultation Jul to Aug 16
- Public Consultation Event (s) Sep to Oct 16
- Continue public consultation Oct 16 to Mar 17
  - Feedback findings from public consultation exercise
  - Continue refinement of options detail
- Announcement of Preferred Route Spring 2017

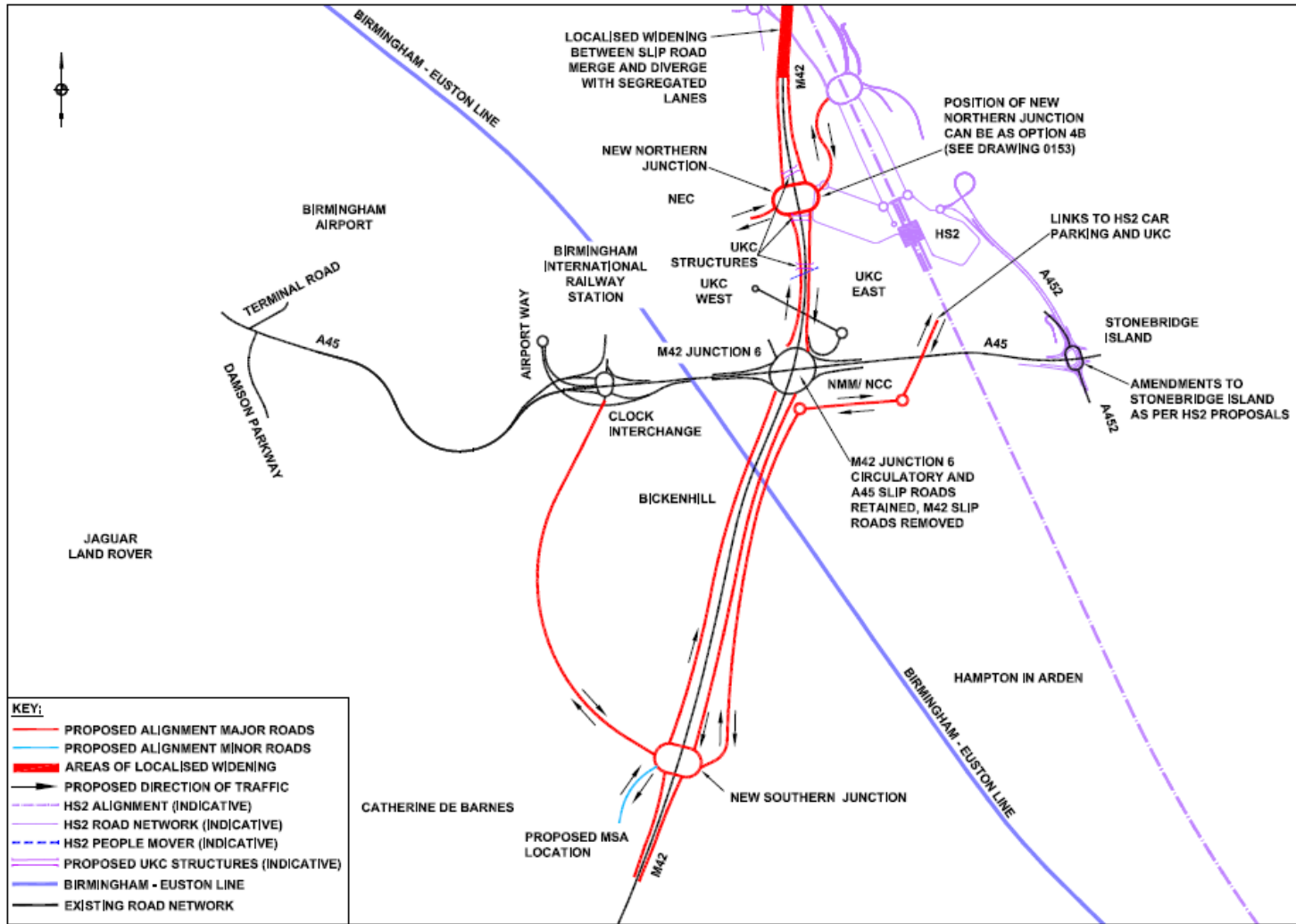


## M42 Junction 6 – Local Stakeholders/ Constraints Plan

### KEY

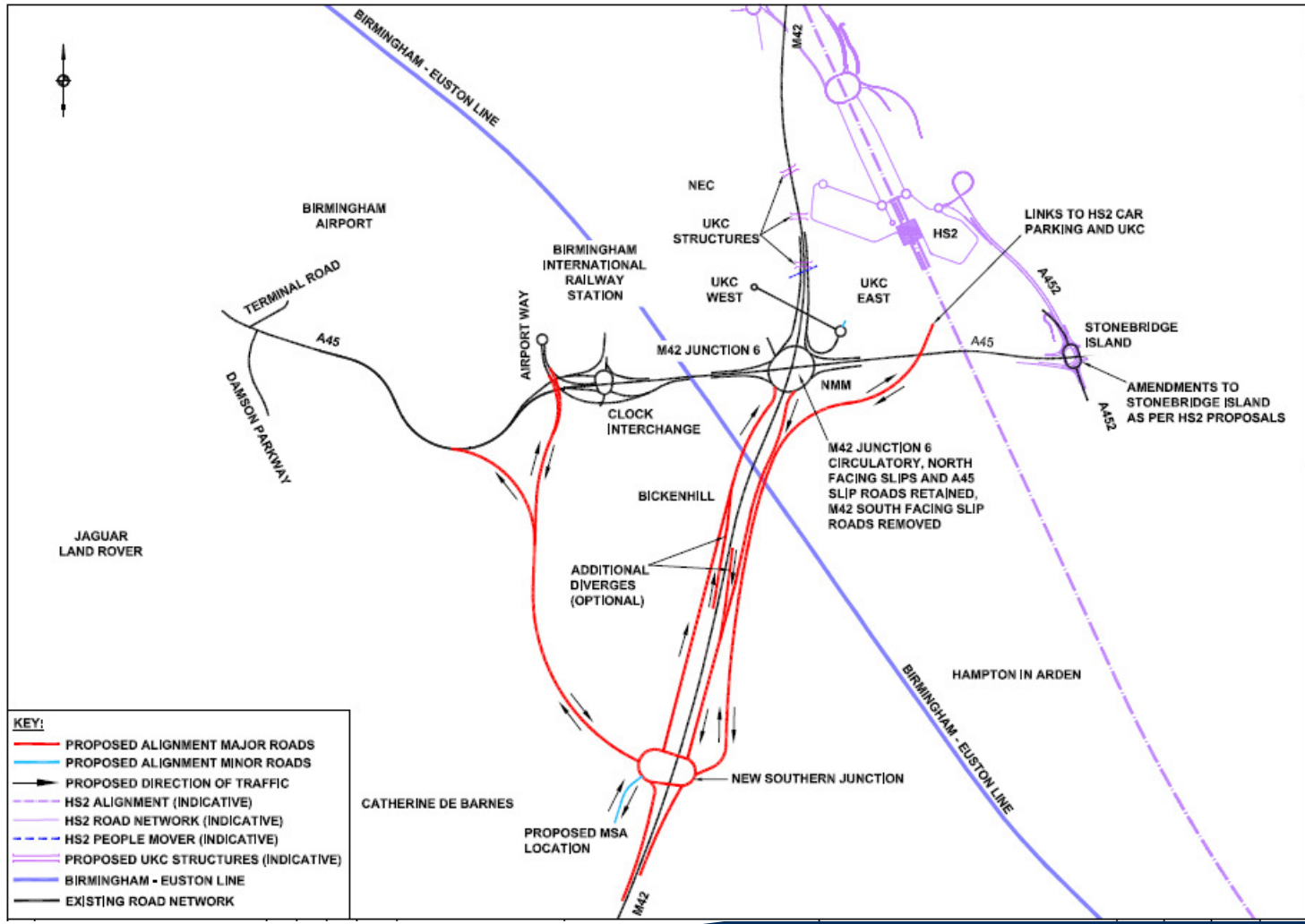
- HIGHWAYS ENGLAND NETWORK
- LOCAL ROADS
- STAKEHOLDERS - COMMUNITIES & BUSINESSES
- HS2 RAIL ALIGNMENT (INDICATIVE)
- HS2 ROAD ALIGNMENT (INDICATIVE)
- HS2 PEOPLE MOVER (INDICATIVE)
- BIRMINGHAM - EUSTON LINE
- RIVER/STREAM/BROOK
- PROPOSED UKC STRUCTURES
- SSSI
- ANCIENT WOODLAND/COPPICE/COPSE
- STRATEGIC WASTE MANAGEMENT SITE
- GREEN BELT
- FLOOD ZONE

# North and South Junction Option

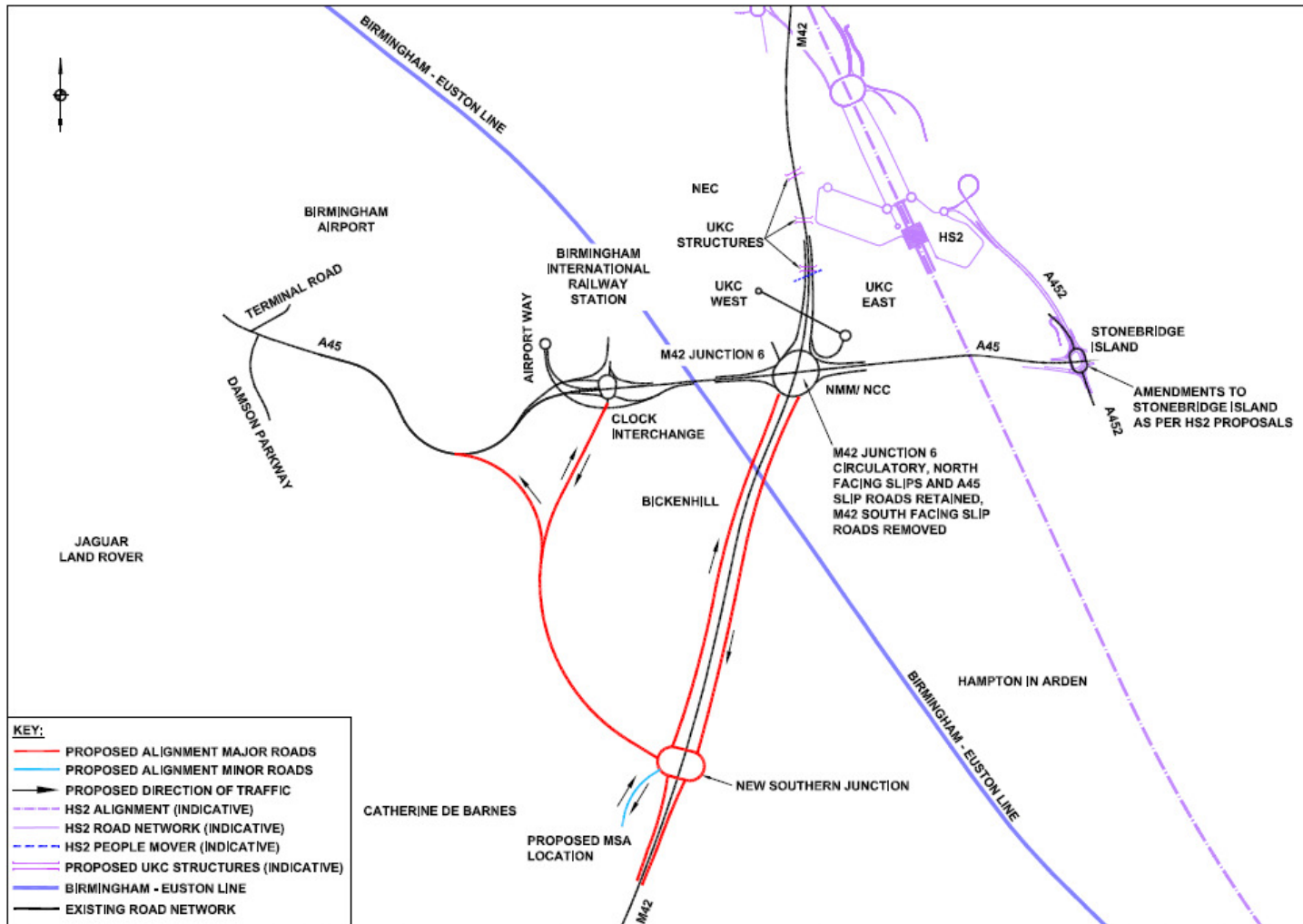




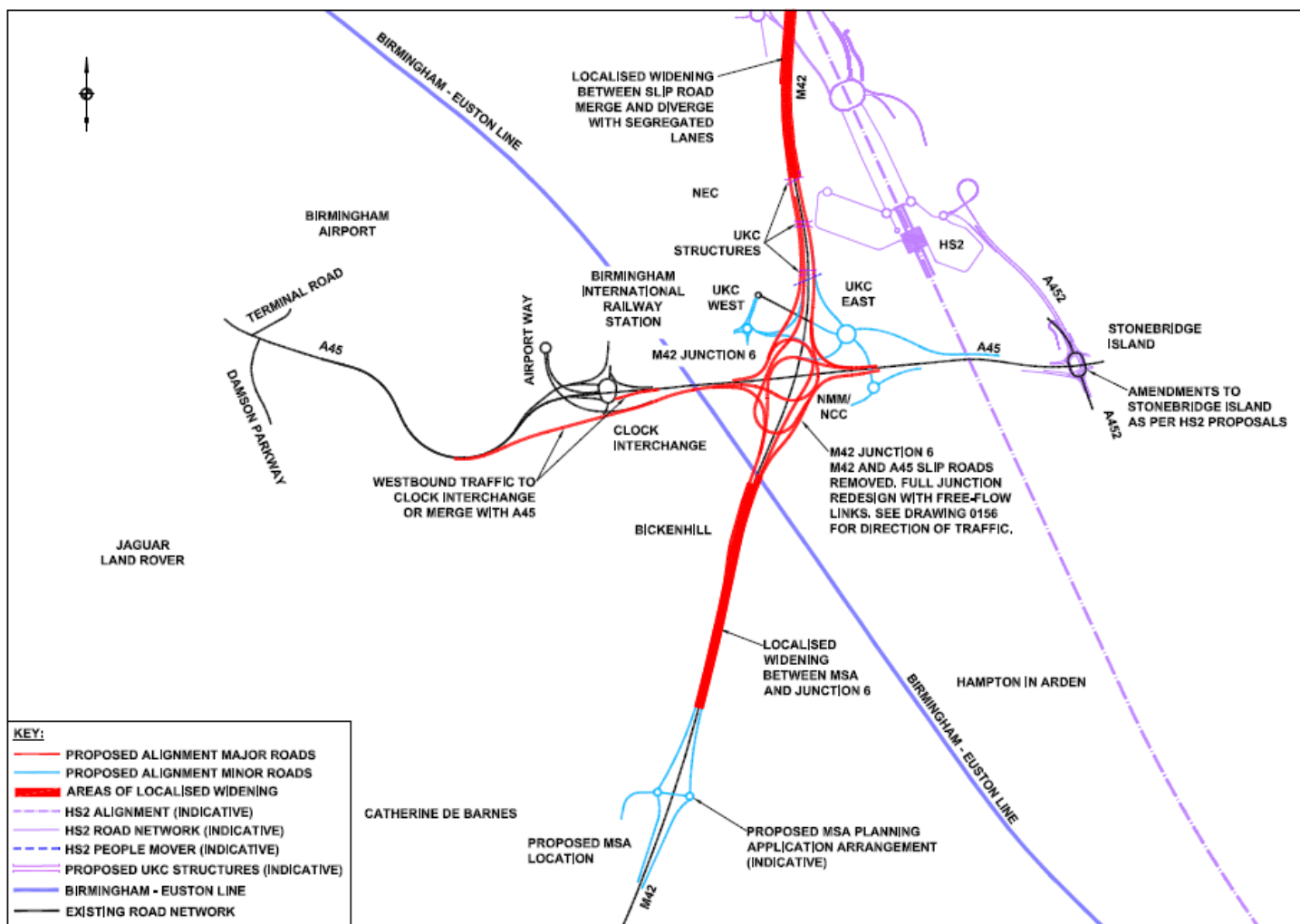
# Southern Junction Option



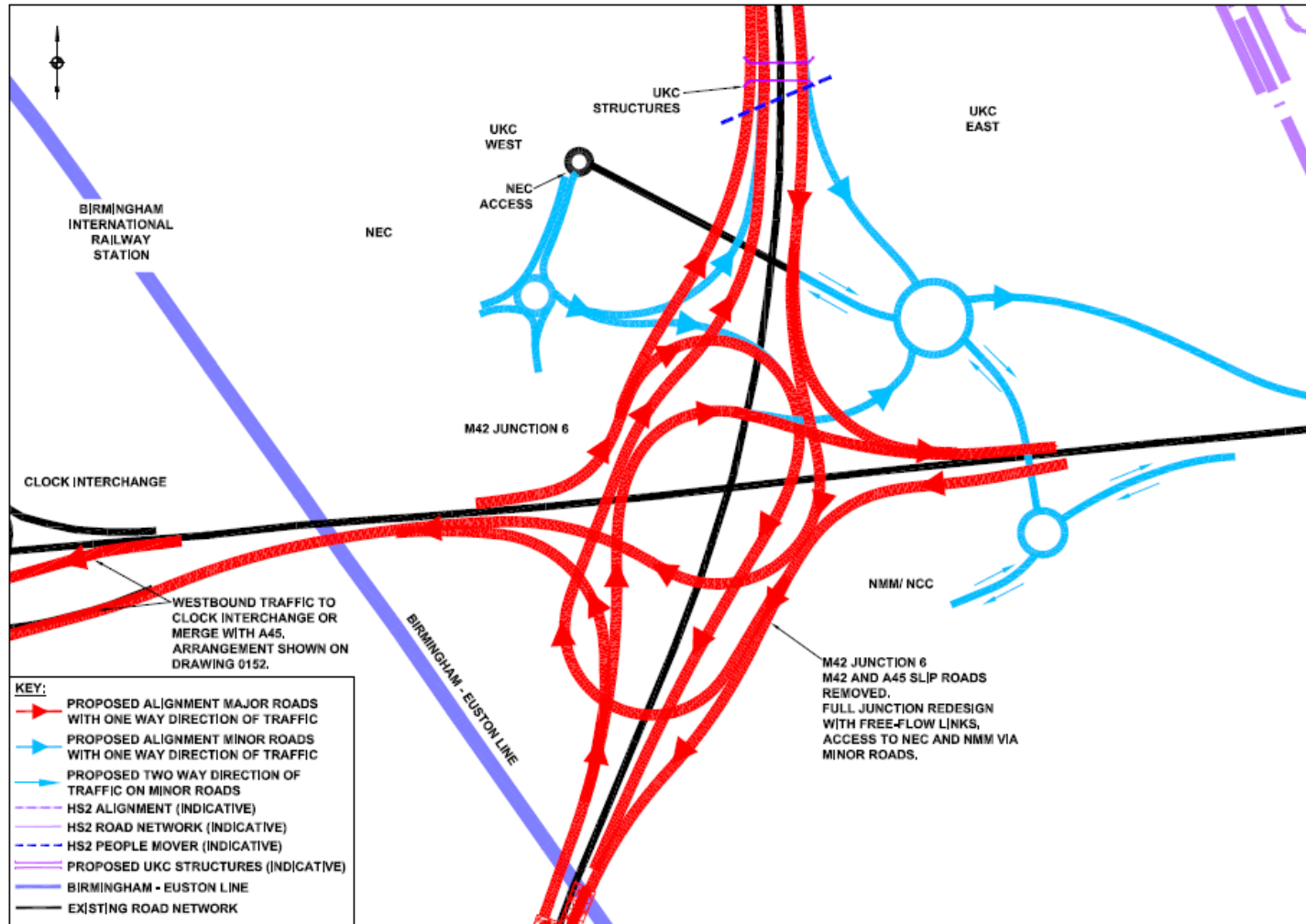
# Southern Junction Option (alternative)



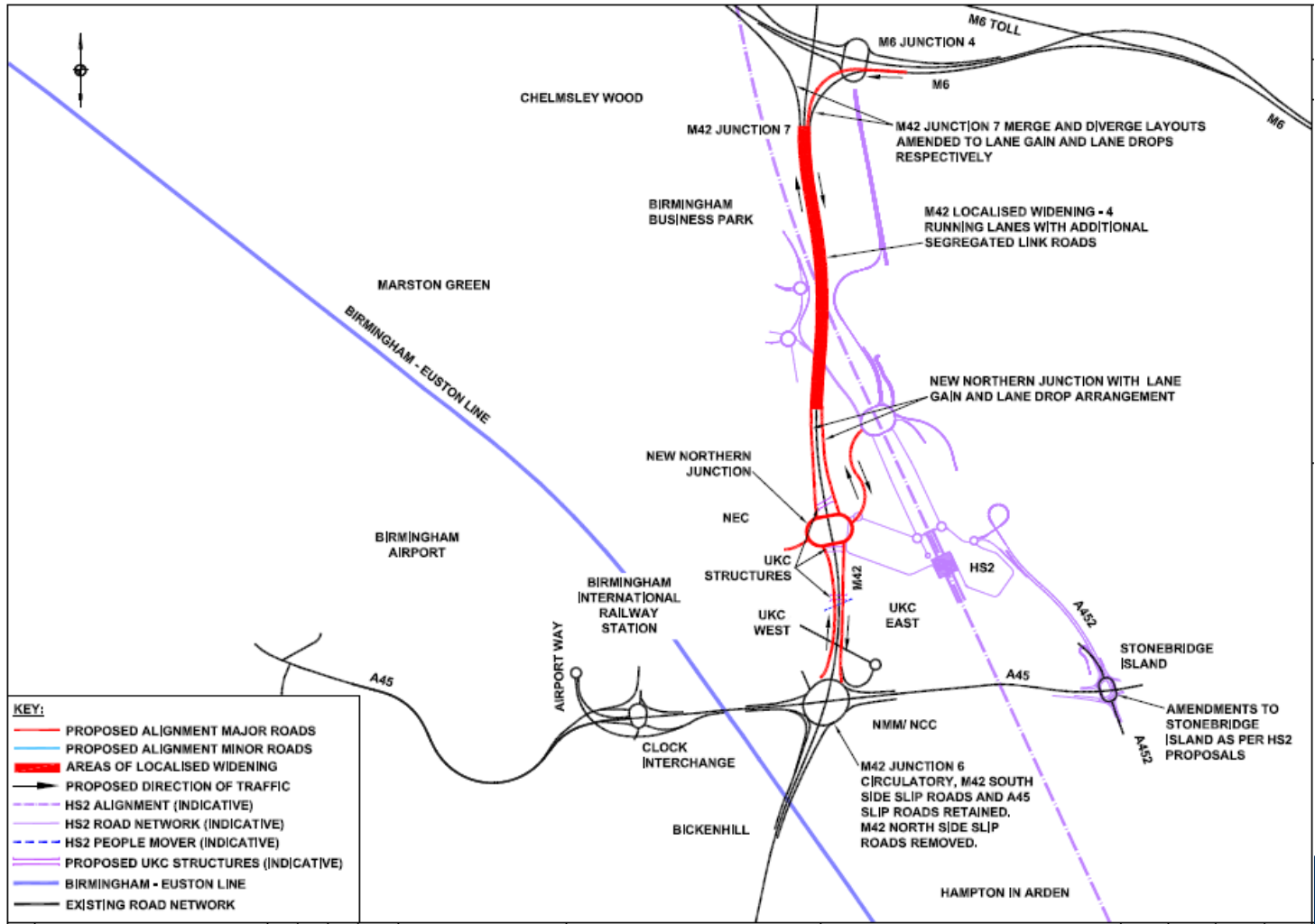
# Interchange Option



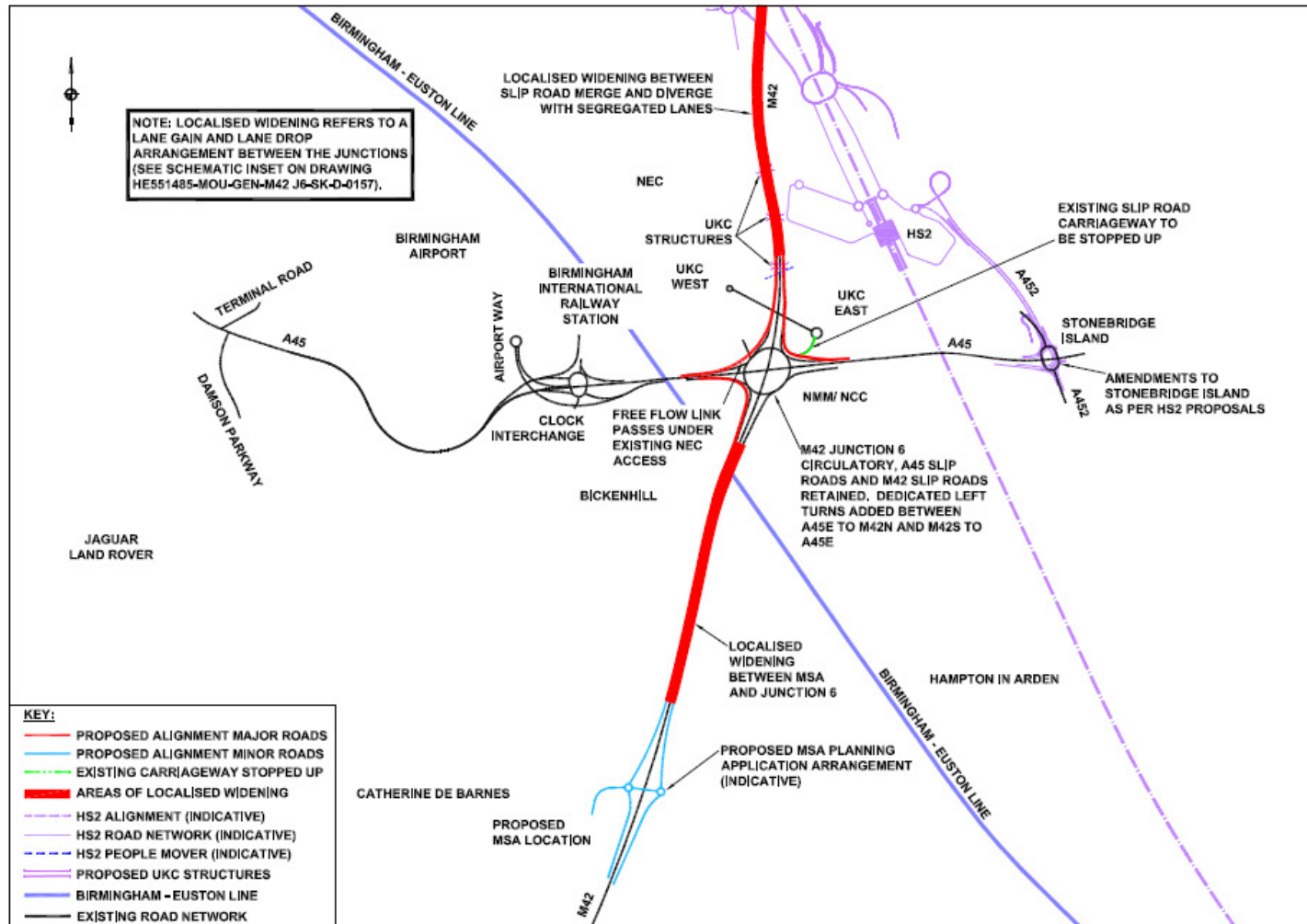
# Interchange Option – detailed plan



# Northern Junction Option



## Do Something Option - Localised Widening



## M42 J6 Improvement - Proposed Delivery Timeline

- Public Consultations Sept/Oct 16
- Preferred Route Announcement Spring 17
- Preliminary Design/ Statutory Consultation Mar 17 - Mar 18
- DCO Pre Application Spring 18
- DCO Formal Application Spring 19
- SoS Decision to Proceed Winter 19
- Start of Works Early 20
- Open to Traffic 2023

## M42 J6 Improvement – Follow Up

### ▪ Your Feedback on Options

- HE Website
  - <http://www.highways.gov.uk/roads/road-projects/M42-Junction-6-Improvement>
- E-mail
  - m42Junction6@highwaysengland.co.uk

### ▪ Scheme Contacts

- |                                       |                   |
|---------------------------------------|-------------------|
| – Highways England Programme Manager  | - Jonathan Pizzey |
| – Highways England Project Manager    | - Rob Edwards     |
| – Highways England Assistant PM       | - Chris Harris    |
| – Mouchel Project Director            | - Robin Jackson   |
| – Mouchel Project Manager             | - Oliver Garland  |
| – Mouchel Stakeholder Liaison Manager | - Vicky Bramhill  |

Mouchel working on behalf of Highways England to deliver scheme